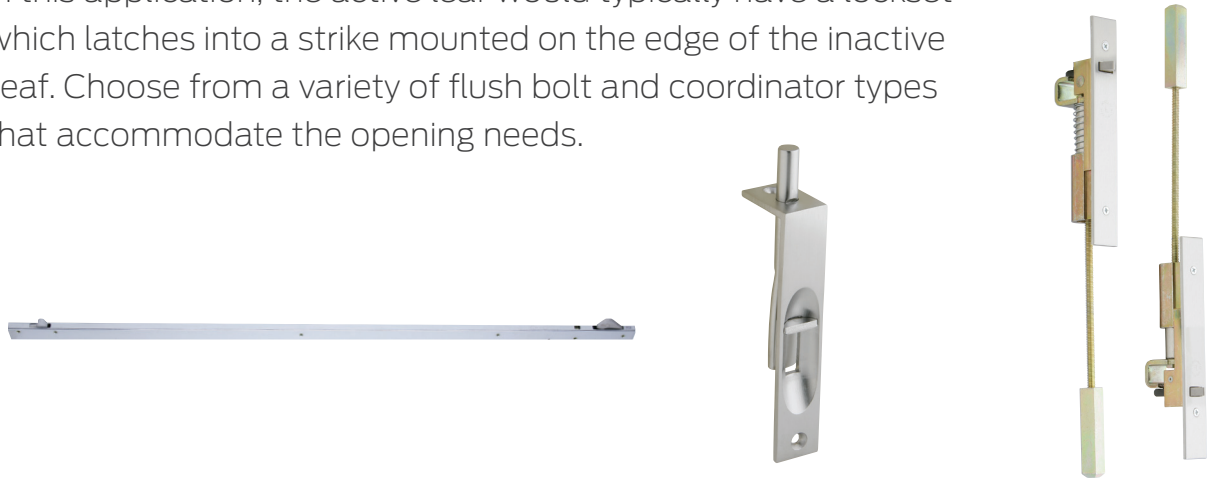


Flush bolts, strikes and coordinators

Ives flush bolts, dust proof strikes, and coordinators are used on pairs of doors to secure the inactive leaf, projecting into the frame head and into a floor strike. In this application, the active leaf would typically have a lockset which latches into a strike mounted on the edge of the inactive leaf. Choose from a variety of flush bolt and coordinator types that accommodate the opening needs.



Introduction

Table of contents

Hinges and pivots

Pulls, push bars and plates

Flush bolts, strikes and coordinators

Latches, catches and bolts

Door stops, holders and silencers

Exterior hardware

Miscellaneous hardware

Flush bolts, strikes and coordinators

Automatic flush bolts

FB31P / FB31T / FB31B

Top and bottom flush bolts - metal doors

- FB31P top and bottom bolts pair
- FB31T top bolt only
- FB31B bottom bolt only
- Only for use with metal doors
- Fully automatic—inactive door is latched, bolts are extended when active door closes, door is unlatched, bolts retract when active door is opened
- Low actuation forces—top bolt has no spring tension
- Non-handed
- Bolt throw is $\frac{3}{4}$ " with a $\frac{7}{8}$ " vertical adjustment
- Bolt backset is $\frac{3}{4}$ "
- Standard rod length is 12", which is measured from the center of the flush bolt body to the bolt tip

Specifications

Mounting hardware	▪ 8-32 X $\frac{3}{8}$ " UFPHMS
	▪ 10-12 X $1\frac{1}{4}$ " Plastic anchor
	▪ 6-32 X $\frac{3}{8}$ " FPHMS
	▪ 6 X $\frac{3}{4}$ " FPHSMS
	▪ 8 X 1" FPHSMS
▪ 10 X 1" FPHSMS	

Certifications	▪ Fits standard ANSI/BHMA A115.4 door frame preparations.
	▪ UL10C Listed (3 hour) fire doors 8'0" x 10'0" when both top and bottom bolt used

Options

Optional rod lengths available for top bolt only on non-fire rated openings—18", 24", 36" and 48"

Dimensions

Body size (Width x Length x Depth)	Guide size (Width x Length x Height x Thickness)	Strike size (Width x Length x Thickness)	Rub plate size (Width x Length x Thickness)
1" x $6\frac{3}{4}$ " x 2"	1" x $1\frac{27}{32}$ " x $2\frac{27}{32}$ " x $\frac{3}{32}$ "	$\frac{15}{16}$ " x $2\frac{1}{4}$ " x $\frac{1}{16}$ "	$1\frac{1}{4}$ " x $1\frac{11}{16}$ " x $\frac{3}{64}$ "

Finishes

BHMA	Description	Substrate	Finish
605	Bright brass	Brass	US3
606	Satin brass	Brass	US4
612	Satin bronze	Brass	US10
613	Oil rubbed bronze	Brass	US10B
BLK	Matte black	Stainless steel	—
629	Bright stainless steel	Stainless steel	US32
630	Satin stainless steel	Stainless steel	US32D

Custom finishes are available as engineering special, consult customer service.

Additional accessories

- Security pin screws
- DP1 and DP2 dust proof strike, see page 167



FB32 / FB33

Top bolt with auxiliary fire latch - metal doors (models with and without retrofit plate)

- FB32 top bolt with auxiliary fire latch only
- FB33 top bolt with auxiliary fire latch and retrofit plate
- For use with metal doors only
- Fully automatic—inactive door is latched, bolts are extended when active door closes, door is unlatched, bolts retract when active door is opened
- FB32 Model with auxiliary fire latch eliminates the bottom bolt
- FB33 Model with auxiliary fire latch eliminates the bottom bolt and includes a retrofit plate to cover existing bottom bolt prep
- Low actuation forces—top bolt has no spring tension
- Non-handed
- Bolt throw is $\frac{3}{4}$ " with a $\frac{7}{8}$ " vertical adjustment
- Bolt backset is $\frac{3}{4}$ "
- Standard rod length is 12", which is measured from the center of the flush bolt body to the bolt tip

Specifications

Mounting hardware	<ul style="list-style-type: none"> ▪ 8-32 X $\frac{3}{8}$" UFPHMS ▪ 10-12 X $1\frac{1}{4}$" Plastic anchor ▪ 6-32 X $\frac{3}{8}$" FPHMS ▪ 6 X $\frac{3}{4}$" FPHSMS ▪ 8 X 1" FPHSMS ▪ 10 X 1" FPHSMS
Certifications	<ul style="list-style-type: none"> ▪ Fits standard ANSI/BHMA A115.4 door frame preparations ▪ UL10C Listed (3 hour) fire doors 8'0" x 8'0"

Options

Optional rod lengths available for top bolt only on non-fire rated openings—18", 24", 36" and 48"

Dimensions

Body size (Width x Length x Depth)	Guide size (Width x Length x Height x Thickness)	Strike size (Width x Length x Thickness)
1" x 6 $\frac{3}{4}$ " x 2"	1" x 1 $\frac{27}{32}$ " x 2 $\frac{27}{32}$ " x 3 $\frac{3}{32}$ "	$\frac{15}{16}$ " x 2 $\frac{1}{4}$ " x $\frac{1}{16}$ "
Rub plate size (Width x Length x Thickness)	Auxiliary fire latch size (Width x Length x Depth)	Retrofit plate size (Width x Length x Thickness)
1 $\frac{1}{4}$ " x 1 $\frac{11}{16}$ " x 3 $\frac{3}{64}$ "	1" x 1 $\frac{3}{4}$ " x 3 $\frac{1}{4}$ "	1" x 6 $\frac{3}{4}$ " x 3 $\frac{3}{32}$ "

Finishes

BHMA	Description	Substrate	Finish
605	Bright Brass	Brass	US3
606	Satin Brass	Brass	US4
612	Satin Bronze	Brass	US10
613	Oil Rubbed Bronze	Brass	US10B
BLK	Matte Black	Stainless steel	—
629	Bright Stainless Steel	Stainless steel	US32
630	Satin Stainless Steel	Stainless steel	US32D

Custom finishes are available as engineering special, consult customer service.

Additional accessories

- Security pin screws



Top bolt

Auxiliary fire latch

Flush bolts, strikes and coordinators

Automatic flush bolts

FB41P / FB41T / FB41B

Top bolt and bottom bolts - wood doors

- FB41P top and bottom bolts (pair)
- FB41T top bolt only
- FB41B bottom bolt only
- For use with wood doors only
- Fully automatic—inactive door is latched, bolts are extended when active door closes, door is unlatched, bolts retract when active door is opened
- Low actuation forces—top bolt has no spring tension
- Non-handed
- Bolt throw is $\frac{3}{4}$ " with a $\frac{7}{8}$ " vertical adjustment
- Bolt backset is $\frac{3}{4}$ "

Specifications

Mounting hardware	<ul style="list-style-type: none"> ▪ 8-32 X $\frac{3}{8}$" UFPHMS ▪ 10-12 X $1\frac{1}{4}$" Plastic anchor ▪ 6-32 X $\frac{3}{8}$" FPHMS ▪ 6 X $\frac{3}{4}$" FPHSMS ▪ 8 X 1" FPHSMS ▪ 10 X 1" FPHSMS
Certifications	<ul style="list-style-type: none"> ▪ UL10C Listed (90 min) fire doors 8'0" x 8'0"

Options

Optional rod lengths available for top bolt only on non-fire rated openings—18", 24", 36" and 48"

Dimensions

Body size (Width x Length x Depth)	Guide size (Width x Length x Height x Thickness)	Strike size (Width x Length x Thickness)	Rub plate size (Width x Length x Thickness)
1" x 8 $\frac{1}{2}$ " x 2"	1" x 6" x $\frac{1}{8}$ "	$\frac{15}{16}$ " x 2 $\frac{1}{4}$ " x $\frac{1}{16}$ "	1 $\frac{1}{4}$ " x 1 $\frac{11}{16}$ " x $\frac{3}{64}$ "

Finishes

BHMA	Description	Substrate	Finish
605	Bright Brass	Brass	US3
606	Satin Brass	Brass	US4
612	Satin Bronze	Brass	US10
613	Oil Rubbed Bronze	Brass	US10B
BLK	Matte Black	Stainless steel	—
629	Bright Stainless Steel	Stainless steel	US32
630	Satin Stainless Steel	Stainless steel	US32D

Custom finishes are available as engineering special, consult customer service.

Additional accessories

- Security pin screws
- DP1 and DP2 dust proof strike, see page 167



Flush bolts, strikes and coordinators

Automatic flush bolts

FB42

Top bolt with auxiliary fire latch - wood doors

- For use with wood doors only
- Fully automatic—inactive door is latched, bolts are extended when active door closes, door is unlatched, bolts retract when active door is opened
- FB42 Model with auxiliary fire latch eliminates the bottom bolt
- Low actuation forces—top bolt has no spring tension
- Non-handed
- Bolt throw is $\frac{3}{4}$ " with a $\frac{7}{8}$ " vertical adjustment
- Bolt backset is $\frac{3}{4}$ "

Specifications

Mounting hardware	<ul style="list-style-type: none">▪ 8-32 X $\frac{3}{8}$" UFPHMS▪ 10-12 X $1\frac{1}{4}$" Plastic anchor▪ 6-32 X $\frac{3}{8}$" FPHMS▪ 6 X $\frac{3}{4}$" FPHSMS▪ 8 X 1" FPHSMS▪ 10 X 1" FPHSMS
-------------------	--

Certifications UL10C Listed (20 min) fire doors 8'0" x 8'0"

Dimensions

Body size (Width x Length x Depth)	Guide size (Width x Length x Height x Thickness)	Strike size (Width x Length x Thickness)
1" x 8 $\frac{1}{2}$ " x 2"	1" x 6" x $\frac{1}{8}$ "	$\frac{15}{16}$ " x 2 $\frac{1}{4}$ " x $\frac{1}{16}$ "
Rub plate size (Width x Length x Thickness)	Auxiliary fire latch size (Width x Length x Depth)	
1 $\frac{1}{4}$ " x 1 $\frac{11}{16}$ " x $\frac{3}{64}$ "	1" x 1 $\frac{3}{4}$ " x 3 $\frac{1}{4}$ "	

Finishes

BHMA	Description	Substrate	Finish
605	Bright Brass	Brass	US3
606	Satin Brass	Brass	US4
612	Satin Bronze	Brass	US10
613	Oil Rubbed Bronze	Brass	US10B
BLK	Matte Black	Stainless steel	—
629	Bright Stainless Steel	Stainless steel	US32
630	Satin Stainless Steel	Stainless steel	US32D

Custom finishes are available as engineering special, consult customer service.

Additional accessories

- Security pin screws



Flush bolts, strikes and coordinators

Constant latching flush bolts

FB51P / FB51T

Top bolt and bottom bolts - metal doors

- FB51P top and bottom bolts (pair)
- FB51T top bolt only
- For use with metal doors only
- Constant latching—inactive door remains latched until the active door is opened, releasing the automatic bottom bolt and then the top bolt can be manually released (inactive door will relatch automatically when closed)
- Low actuation forces
- Non-handed
- Bolt throw is $\frac{3}{4}$ " with a $\frac{7}{8}$ " vertical adjustment
- Bolt backset is $\frac{3}{4}$ "
- Standard rod length is 12", which is measured from the center of the flush bolt body to the bolt tip

Specifications

Mounting hardware	▪ 8-32 X $\frac{3}{8}$ " UFPHMS
	▪ 10-12 X $1\frac{1}{4}$ " Plastic anchor
	▪ 6-32 X $\frac{3}{8}$ " FPHMS
	▪ 6 X $\frac{3}{4}$ " FPHSMS
	▪ 8 X 1" FPHSMS
	▪ 10 X 1" FPHSMS

Certifications	▪ Fits standard ANSI/BHMA A115.4 door frame preparations.
	▪ UL10C Listed (3 hour) fire doors 8'0" X 8'0"

Options

Optional rod lengths available for top bolt only on non-fire rated openings—18", 24", 36" and 48"

Dimensions

Body size (Width x Length x Depth)	Guide size (Width x Length x Height x Thickness)	Strike size (Width x Length x Thickness)	Rub plate size (Width x Length x Thickness)
1" X $6\frac{3}{4}$ " X 2"	1" X $1\frac{27}{32}$ " X $1\frac{11}{16}$ " X $\frac{3}{32}$ "	$1\frac{15}{16}$ " X $2\frac{1}{4}$ " X $\frac{1}{16}$ "	$1\frac{1}{4}$ " X $1\frac{11}{16}$ " X $\frac{3}{64}$ "

Finishes

BHMA	Description	Substrate	Finish
605	Bright Brass	Brass	US3
606	Satin Brass	Brass	US4
612	Satin Bronze	Brass	US10
613	Oil Rubbed Bronze	Brass	US10B
BLK	Matte Black	Stainless steel	—
629	Bright Stainless Steel	Stainless steel	US32
630	Satin Stainless Steel	Stainless steel	US32D

Custom finishes are available as engineering special, consult customer service.

Additional accessories

- Security pin screws
- DPI and DP2 dust proof strike, see page 167



FB52 / FB53

Top bolt with auxiliary fire latch - metal doors (models with and without retrofit plate)

- FB52 top bolt with auxiliary fire latch only
- FB53 top bolt with auxiliary fire latch and retrofit plate
- For use with metal doors only
- Constant latching—inactive door remains latched until the active door is opened, releasing the automatic bottom bolt and then the top bolt can be manually released (inactive door will relatch automatically when closed)
 - FB52 Model with auxiliary fire latch eliminates the bottom bolt
 - FB53 Model with auxiliary fire latch eliminates the bottom bolt and includes a retrofit plate to cover existing bottom bolt prep
- Low actuation forces
- Non-handed
- Bolt throw is $\frac{3}{4}$ " with a $\frac{7}{8}$ " vertical adjustment
- Bolt backset is $\frac{3}{4}$ "
- Standard rod length is 12", which is measured from the center of the flush bolt body to the bolt tip

Specifications

Mounting hardware	<ul style="list-style-type: none"> ▪ 8-32 X $\frac{3}{8}$" UFPHMS ▪ 10-12 X $1\frac{1}{4}$" Plastic anchor ▪ 6-32 X $\frac{3}{8}$" FPHMS ▪ 6 X $\frac{3}{4}$" FPHSMS ▪ 8 X 1" FPHSMS ▪ 10 X 1" FPHSMS
Certifications	<ul style="list-style-type: none"> ▪ Fits standard ANSI/BHMA A115.4 door frame preparations ▪ UL10C Listed (3 hour) fire doors 8'0" x 8'0"

Options

Optional rod lengths available for top bolt only on non-fire rated openings—18", 24", 36" and 48"

Dimensions

Body size (Width x Length x Depth)	Guide size (Width x Length x Height x Thickness)	Strike size (Width x Length x Thickness)
$1\frac{1}{2}$ " x $6\frac{3}{4}$ " x 2"	$1\frac{1}{2}$ " x $1\frac{27}{32}$ " x $1\frac{1}{16}$ " x $\frac{3}{32}$ "	$\frac{15}{16}$ " x $2\frac{1}{4}$ " x $\frac{1}{16}$ "
Rub plate size (Width x Length x Thickness)	Auxiliary fire latch size (Width x Length x Depth)	Retrofit plate size (Width x Length x Thickness)
$1\frac{1}{4}$ " x $1\frac{11}{16}$ " x $\frac{3}{64}$ "	$1\frac{1}{2}$ " x $1\frac{3}{4}$ " x $3\frac{1}{4}$ "	$1\frac{1}{2}$ " x $6\frac{3}{4}$ " x $\frac{3}{32}$ "

Finishes

BHMA	Description	Substrate	Finish
605	Bright Brass	Brass	US3
606	Satin Brass	Brass	US4
612	Satin Bronze	Brass	US10
613	Oil Rubbed Bronze	Brass	US10B
BLK	Matte Black	Stainless steel	—
629	Bright Stainless Steel	Stainless steel	US32
630	Satin Stainless Steel	Stainless steel	US32D

Custom finishes are available as engineering special, consult customer service.

Additional accessories

- Security pin screws



Flush bolts, strikes and coordinators

Constant latching flush bolts

FB61P / FB61T

Top bolt and bottom bolts - wood doors

- FB61P top and bottom bolts (pair)
- FB61T top bolt only
- For use with wood doors only
- Constant latching—inactive door remains latched until the active door is opened, releasing the automatic bottom bolt and then the top bolt can be manually released (inactive door will relatch automatically when door closes)
- Low actuation forces
- Non-handed
- Bolt throw is $\frac{3}{4}$ " with a $\frac{7}{8}$ " vertical adjustment
- Bolt backset is $\frac{3}{4}$ "

Specifications

Mounting hardware	<ul style="list-style-type: none"> ▪ 8-32 X $\frac{3}{8}$" UFPHMS ▪ 10-12 X $1\frac{1}{4}$" Plastic anchor ▪ 6-32 X $\frac{3}{8}$" FPHMS ▪ 6 X $\frac{3}{4}$" FPHSMS ▪ 8 X 1" FPHSMS ▪ 10 X 1" FPHSMS
-------------------	---

Certifications	UL10C Listed (90 min) fire doors 8'0" X 8'0"
----------------	--

Dimensions

Body size (Width x Length x Depth)	Guide size (Width x Length x Height x Thickness)	Strike size (Width x Length x Thickness)	Rub plate size (Width x Length x Thickness)
1" x 8 $\frac{1}{2}$ " x 2"	1" x 6" x $\frac{1}{8}$ "	$\frac{15}{16}$ " x 2 $\frac{1}{4}$ " x $\frac{1}{16}$ "	1 $\frac{1}{4}$ " x 1 $\frac{1}{16}$ " x $\frac{3}{64}$ "

Finishes

BHMA	Description	Substrate	Finish
605	Bright Brass	Brass	US3
606	Satin Brass	Brass	US4
612	Satin Bronze	Brass	US10
613	Oil Rubbed Bronze	Brass	US10B
BLK	Matte Black	Stainless steel	—
629	Bright Stainless Steel	Stainless steel	US32
630	Satin Stainless Steel	Stainless steel	US32D

Custom finishes are available as engineering special, consult customer service.

Additional accessories

- Security pin screws
- DPI and DP2 dust proof strike, see page 167



Top bolt

Bottom bolt

Flush bolts, strikes and coordinators

Constant latching flush bolts

FB62

Top bolt with auxiliary fire latch - wood doors

- For use with wood doors only
- Fully automatic—inactive door is latched, bolts are extended when active door closes, door is unlatched, bolts retract when active door is opened
 - FB62 model with auxiliary fire latch eliminates the bottom bolt
- Low actuation forces
- Non-handed
- Bolt throw is $\frac{3}{4}$ " with a $\frac{7}{8}$ " vertical adjustment
- Bolt backset is $\frac{3}{4}$ "

Specifications

Mounting hardware	<ul style="list-style-type: none"> ▪ 8-32 X $\frac{3}{8}$" UFPHMS ▪ 10-12 X $1\frac{1}{4}$" Plastic anchor ▪ 6-32 X $\frac{3}{8}$" FPHMS ▪ 6 X $\frac{3}{4}$" FPHSMS ▪ 8 X 1" FPHSMS ▪ 10 X 1" FPHSMS
Certifications	UL10C Listed (20 min) fire doors 8'0" x 8'0"

Dimensions

Body size (Width x Length x Depth)	Guide size (Width x Length x Height x Thickness)	Strike size (Width x Length x Thickness)
1" x 8 $\frac{1}{2}$ " x 2"	1" x 6" x $\frac{1}{8}$ "	$\frac{15}{16}$ " x 2 $\frac{1}{4}$ " x $\frac{1}{16}$ "
Rub plate size (Width x Length x Thickness)	Auxiliary fire latch size (Width x Length x Depth)	
1 $\frac{1}{4}$ " x 1 $\frac{11}{16}$ " x $\frac{3}{64}$ "	1" x 1 $\frac{3}{4}$ " x 3 $\frac{1}{4}$ "	

Finishes

BHMA	Description	Substrate	Finish
605	Bright Brass	Brass	US3
606	Satin Brass	Brass	US4
612	Satin Bronze	Brass	US10
613	Oil Rubbed Bronze	Brass	US10B
BLK	Matte Black	Stainless steel	–
629	Bright Stainless Steel	Stainless steel	US32
630	Satin Stainless Steel	Stainless steel	US32D

Custom finishes are available as engineering special, consult customer service.

Additional accessories

- Security pin screws



Top bolt

Auxiliary fire latch

Flush bolts, strikes and coordinators

Manual flush bolts

Exceptionally smooth working flush bolts with sharp, crisp lines. Double action spring design provides automatic holding of brass bolt in projected or retracted position, and assures ease of operation in conjunction with deep cup finger hole.

261

Flush bolt - 4"

- Made from polished cast brass
- Bolt tip is $\frac{5}{16}$ " diameter
- Bolt throw is $\frac{3}{4}$ "
- Bolt backset is $\frac{15}{32}$ "

Specifications

Mounting hardware	▪ 5 X $\frac{5}{8}$ " FPHSMS
	▪ 8 X $\frac{3}{4}$ " FPHSMS

Dimensions

Body size (Width x Length x Depth)	Strike size (Width x Length)
1" x 8 $\frac{1}{2}$ " x 2"	$\frac{15}{16}$ " x 2 $\frac{1}{4}$ " x $\frac{1}{16}$ "



262

Flush bolt - 6" square end

- Made from polished cast brass
- Bolt tip is $\frac{1}{2}$ " diameter
- Bolt throw is 1"
- Bolt backset is $\frac{15}{32}$ "

Specifications

Mounting hardware	▪ 5 X $\frac{5}{8}$ " FPHSMS
	▪ 8 X $\frac{3}{4}$ " FPHSMS

Dimensions

Body size (Width x Length x Depth)	Strike size (Width x Length)
$\frac{3}{4}$ " x 6" x 1 $\frac{11}{32}$ "	$\frac{7}{8}$ " x 1 $\frac{3}{4}$ "

A flush bolt with radiused bottom faceplate designed specifically for simple one-step router installation. Double action spring design provides automatic holding of brass bolt in projected or retracted position, and assures ease of operation in conjunction with deep cup finger hole.

265

Flush bolt - 6" round end

- Faceplate is polished solid brass; bolt is made from aluminum zinc alloy
- Bolt tip is $\frac{1}{2}$ " diameter
- Bolt throw is 1"
- Bolt backset is $\frac{1}{2}$ "

Specifications

Mounting hardware	▪ 5 X $\frac{5}{8}$ " FPHSMS
	▪ 8 X $\frac{3}{4}$ " FPHSMS

Dimensions

Body size (Width x Length x Depth)	Strike size (Width x Length)
$\frac{3}{4}$ " x 6" x 1 $\frac{7}{16}$ "	$\frac{7}{8}$ " x 1 $\frac{3}{4}$ "



261, 262 and 265 Finishes

BHMA	Description	Substrate	Finish
605	Bright Brass	Brass	US3
609	Satin Brass, Blackened	Brass	US5
613	Oil Rubbed Bronze	Brass	US10B
619	Satin Nickel	Brass	US15
625	Bright Chrome	Brass	US26
626	Satin Chrome	Brass	US26D

Custom finishes are available as engineering special, consult customer service.

FB358

Top or bottom bolts - wood doors

- When the active door is opened, the lever can be moved to the 'up' position, retracting the bolt and allowing the inactive leaf to be opened
 - When the inactive leaf is closed, the lever can be moved to the 'down' position, projecting the bolt into the strike and securely locking the inactive leaf
- Reduces installation costs; requires only simple router mortise at top and bottom corners of doors
- Door strength and rigidity maintained by tying door faces to reinforcing extensions on guide with machine screws and bearing washers, not supplied
- Non-handed
- Bolt tip 1/2" diameter
- Bolt throw is 3/4" with a 7/8" vertical adjustment
- Bolt backset is 3/4"
- Not available for rabbeted door installations



Specifications

Mounting hardware	<ul style="list-style-type: none"> 8 X 1" FPHSMS 8 X 3/4" FPHSMS
Certifications	UL10C Listed (90 min) fire doors 8'0" X 10'0" (fire rated openings require top and bottom bolt)

Dimensions

Body size (Width x Length x Depth)	Guide size (Width x Length x Height x Thickness)	Strike size (Width x Length x Thickness)
1" x 6 3/4" x 1 3/8"	1" x 2 1/2" x 5/64"	15/16" x 2 1/4" x 5/64"

Finishes

BHMA	Description	Substrate	Finish
605	Bright Brass	Brass	US3
606	Satin Brass	Brass	US4
612	Satin Bronze	Brass	US10
613	Oil Rubbed Bronze	Brass	US10B
619	Satin Nickel	Brass	US15
622	Matte Black	Brass	BLK
625	Bright Chrome	Brass	US26
626	Satin Chrome	Brass	US26D
643e/716	Aged Bronze	Brass	-

Custom finishes are available as engineering special, consult customer service.

Additional accessories

- DP1 and DP2 dust proof strike, see page 167

Flush bolts, strikes and coordinators

Manual flush bolts

FB457

Top or bottom bolts - metal doors

- When the active door is opened, the lever can be moved to the 'up' position, retracting the bolt and allowing the inactive leaf to be opened
 - When the inactive leaf is closed, the lever can be moved to the 'down' position, projecting the bolt into the strike and securely locking the inactive leaf
- Simplified installation in metal frames
 - Round bolt head requires only a punched hole
 - Use of strike optional
 - Special design of guide and flat sided bolt tip to prevent bolt rotation
- Non-handed
- Bolt tip $\frac{1}{2}$ " diameter
- Bolt throw is $\frac{3}{4}$ " with a $\frac{7}{8}$ " vertical adjustment
- Bolt backset is $\frac{3}{4}$ "
- Standard rod length is 12", which is measured from the center of the flush bolt body to the bolt tip

Specifications

Mounting hardware	8-32 X 1" FPHMS
Certifications	UL10C Listed (3 hour) fire doors 8'0" X 10'0" (fire rated openings require top and bottom bolt)

Options

Optional rod lengths available for top bolt only on non-fire rated openings—18", 24" for fire rated doors with AHJ approval, 36" and 48" for non-fire rated doors

Dimensions

Body size (Width x Length x Depth)	Guide size (Width x Length x Height x Thickness)	Strike size (Width x Length x Thickness)
$1\frac{1}{4}" \times 6\frac{3}{4}" \times 1\frac{1}{8}"$	$1" \times 2" \times \frac{5}{64}"$	$\frac{15}{16}" \times 2\frac{1}{4}" \times \frac{5}{64}"$

Finishes

BHMA	Description	Substrate	Finish
605	Bright Brass	Brass	US3
606	Satin Brass	Brass	US4
612	Satin Bronze	Brass	US10
613	Oil Rubbed Bronze	Brass	US10B
619	Satin Nickel	Brass	US15
622	Matte Black	Brass	BLK
625	Bright Chrome	Brass	US26
626	Satin Chrome	Brass	US26D
643e/716	Aged Bronze	Brass	—

Custom finishes are available as engineering special, consult customer service.

Additional accessories

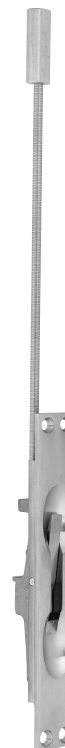
- DP1 and DP2 dust proof strike, see page 167



FB458

Top or bottom bolts - metal doors

- When the active door is opened, the lever can be moved to the ‘up’ position, retracting the bolt and allowing the inactive leaf to be opened
 - When the inactive leaf is closed, the lever can be moved to the ‘down’ position, projecting the bolt into the strike and securely locking the inactive leaf
- Simplified installation in metal frames
 - Round bolt head requires only a punched hole
 - Use of strike optional
 - Special design of guide and flat sided bolt tip to prevent bolt rotation
- Non-handed
- Bolt tip 1/2" diameter
- Bolt throw is 3/4" with a 7/8" vertical adjustment
- Bolt backset is 3/4"
- Standard rod length is 12", which is measured from the center of the flush bolt body to the bolt tip



Specifications

Mounting hardware	8-32 X 1" FPHMS
Certifications	UL10C Listed (3 hour) fire doors 8'0" X 10'0" (fire rated openings require top and bottom bolt)

Options

Optional rod lengths available for top bolt only on non-fire rated openings—18", 24" for fire rated doors with AHJ approval, 36" and 48" for non-fire rated doors

Dimensions

Body size (Width x Length x Depth)	Guide size (Width x Length x Height x Thickness)	Strike size (Width x Length x Thickness)
1" x 6 3/4" x 1 1/8"	1" x 2" x 5/64"	15/16" x 2 1/4" x 5/64"

Finishes

BHMA	Description	Substrate	Finish
605	Bright Brass	Brass	US3
606	Satin Brass	Brass	US4
609	Satin Brass, Blackened	Brass	US5
612	Satin Bronze	Brass	US10
613	Oil Rubbed Bronze	Brass	US10B
619	Satin Nickel	Brass	US15
622	Matte Black	Brass	BLK
625	Bright Chrome	Brass	US26
626	Satin Chrome	Brass	US26D
643e/716	Aged Bronze	Brass	—

Custom finishes are available as engineering special, consult customer service.

Additional accessories

- DP1 and DP2 dust proof strike, see page 167

Flush bolts, strikes and coordinators

Dust proof strikes

DP1 / DP2

Dust proof strike

- DP1 - round face plate
- DP2 - rectangular face plate
- Designed for use with the bottom bolt of all flush bolts
- Spring-loaded plunger returns to floor or threshold level anytime flush bolt is retracted, eliminating need to clean standard floor strikes
- Strike hole is $\frac{3}{4}$ " diameter and $1\frac{1}{8}$ " deep

Specifications

Mounting hardware 8-32 X 1" FPHMS

Dimensions

DP1 face plate (Diameter)	DP2 face plate (Width x Length x Thickness)	Body (Diameter x Depth)
$1\frac{7}{16}$ "	$1\frac{5}{8}$ " x $3\frac{1}{2}$ " x $\frac{1}{8}$ "	$1\frac{3}{16}$ " x $1\frac{7}{8}$ "

Finishes

BHMA	Description	Substrate	Finish
605	Bright Brass	Brass	US3
606	Satin Brass	Brass	US4
612	Satin Bronze	Brass	US10
613	Oil Rubbed Bronze	Brass	US10B
619*	Satin Nickel	Brass	US15
622*	Matte Black	Brass	BLK
625	Bright Chrome	Brass	US26
626	Satin Chrome	Brass	US26D
643e/716*	Aged Bronze	Brass	-

*Finishes only available with DP2

Custom finishes are available as engineering special, consult customer service.

Additional accessories

- Security pin screws



DP1



DP2

How to order

COR size		Finish		Filler bar		Device cutout		Active door size	
1	2	3	4	5					
PR	-	8303	-	8	-	US32D	-	4 x 16	

Detail

1 COR size

- 32
- 42
- 52
- 60
- 72

2 Finish

BHMA	Description	Finish
626	Satin Chrome	US26D
628	Satin Aluminum, Clear Anodized	US28
711	Black Anodized	315AN

3 Filler bar (if desired)

- FL20
- FL32
- FL44

4 Vertical rod exit device cutout (if applicable)

A, B, C, D, E, F, G

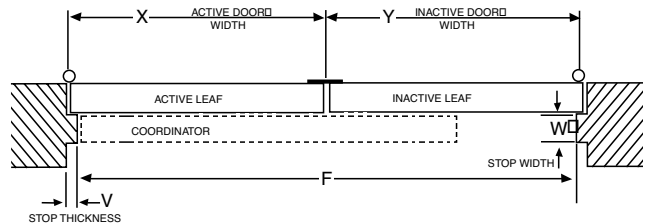
If other vertical rod exit device not listed on chart, from page 167, include information as shown on page 167.

5 Active door size

Required for all vertical rod exit device applications

To determine the size COR you need:

- Start with the active door width (X)
- Next consider the overall frame opening between stops (F)
- Preferably, the coordinator would equal the active door width (X) + approximately 1/2 inactive door width (Y). The coordinator must be 6" longer than the active door width (X) and less than the overall frame opening between stop (F).



Examples:

- Pair of 30" doors, 5/8" stops
 Active door size, X = 30"
 Overall frame opening between stops, F = 58-3/4"
Recommended coordinator: COR42
- Pair of 36" doors, 5/8" stops
 Active door size, X = 36"
 Overall frame opening between stops, F = 70-3/4"
Recommended coordinator: COR52
- 36" Active door, 18" Inactive door, 5/8" stops
 Active door size, X = 36"
 Overall frame opening between stops, F = 52-3/4"
Recommended coordinator: COR42
- 48" Active door, 24" Inactive door, 5/8" stops
 Active door size, X = 48"
 Overall frame opening between stops, F = 94-3/4"
Recommended coordinator: COR60

Flush bolts, strikes and coordinators

Coordinators, filler bars and mounting brackets

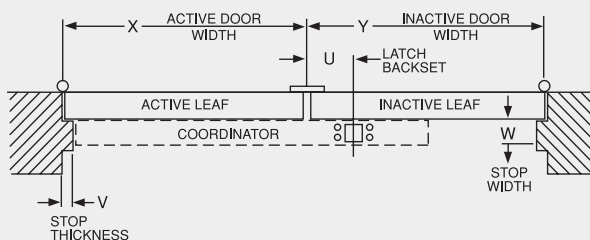
Special factory preparation for use with vertical rod exit devices

Coordinators may need to be prepared at the factory for use with some surface or concealed vertical rod exit devices (see chart).

Exit device manufacturer	Exit device number	Device backset	Maximum active door	Coordinator size needed	Coordinator cutout type	Mounting bracket needed
Von Duprin	5547-F	2 3/8"	33" 43" 51" 63"	42" 52" 60" 72"	Type A	None
Von Duprin	8827-F	2 3/4"	33" 43" 51" 63"	42" 52" 60" 72"	Type B	MB1V, MB2V or MB3V see page 172
Von Duprin	8847-F	2 3/8"	33" 43" 51" 63"	42" 52" 60" 72"	Type C	None
Von Duprin	33/3547 33/3547-F 98/9947 98/9947-F	2 3/4"	33" 43" 51" 64"	42" 52" 60" 72"	Type D	None
Von Duprin	33/3548 33/3548-F 98/9948 98/9948-F	2 3/4"	33" 43" 51" 64"	42" 52" 60" 72"	Type D	None
Von Duprin	33/3547WDC 33/3547WDC-F 98/9947WDC 98/9947WDC-F	1 5/16"	33" 43" 51" 66"	42" 52" 60" 72"	Type E	None
Falcon	17-C F-17-C 18-C F-18-C XX-C F-XX-C 24-C F-24-C 25-C F-25-C	2 3/4"	33" 43" 51" 63"	42" 52" 60" 72"	Type F	None
Falcon	17-C -WDC F-17-C -WDC 18-C -WDC F-18-C -WDC XX-C -WDC F-XX-C -WDC 24-C -WDC F-24-C -WDC 25-C -WDC F-25-C -WDC	2 13/16"	33" 43" 51" 63"	42" 52" 60" 72"	Type G	None

If the exit device is not listed the following information is needed:

- Exit device manufacturer and model number
- Active door size, "X"
- Inactive door size, "Y"
- Exit device backset, "U"
- Stop width, "W"
- Stop thickness if other than 5/8", "V"



COR

Bar coordinators

- The COR Series coordinators are designed for use on pairs of doors when one door needs to close before the other
- All COR units function easily; The active door lever, located nearest to the active stop, holds the active door open until the trigger mechanism is released by the closing of the inactive leaf
- All COR units do not function correctly with swingclear hinges. (consult factory when used with 3/4" offset pivots)
- All COR units are equipped with an adjustable override feature which allows the active door to close under extreme pressure
- All COR units are compatible with flush bolts
- For openings where doors are unequal size
 - The coordinator length should equal the active door width plus approximately 1/2 the inactive door width
 - The coordinator must be 6" longer than the active door width and shorter than the overall frame opening between stops
- The COR Series does not cover the entire length of the stop, so a FL filler bar can be provided to maintain architecturally clean lines

Specifications

Material substrate	Aluminum 6000 Series
Certifications	<ul style="list-style-type: none"> ▪ Meets ANSI/BHMA A156.3 Type 21A ▪ UL Listed for installation on labeled frame

Sizes (available in five sizes for variable door opening widths)

Coordinator number	Length of channel	For opening widths	Common applications
COR32	32"	34" - 52"	Pair of 2'0" doors
COR42	42"	52" - 72"	Pair of 2'6" doors
COR52	52"	62" - 92"	Pair of 3'0" doors
COR60	60"	70" - 108"	Pair of 3'6" doors
COR72	72"	84" - 132"	Pair of 4'0" doors

Options

- Optional filler bars: FL20 - 20", FL32 - 32" and FL44 - 44", available to maintain clean line
- Security pin screws
- Special prep cut-outs: Required for certain vertical exit device applications (see page 169 for common examples)
 - If other vertical rod exit device not listed on chart is required, include required information as shown on page 169 (consult customer service for other applications)

Finishes

BHMA	Description	Substrate	Finish
628	Satin Alumium, Anodized	Aluminum	US28
711	Black Anodized	Aluminum	315AN
713	Satin Chrome, Anodized	Aluminum	–

Custom finishes are available as engineering special, consult customer service.

Available accessories

- Optional mounting brackets available: MB1, MB2, MB1F, MB2F, MB3F, MB1V, MB2V and MB3V for other stop applied hardware
- Security pin screws
- Replacement mounting package
- Replacement rub plate package



Flush bolts, strikes and coordinators

Coordinators, filler bars and mounting brackets

FL

Filler bars

- The COR Series does not cover the entire length of the stop, so a FL filler bar can be provided to maintain architecturally clean lines
- The FL filler bars are available in three sizes for variable frame openings
- FL filler bars are field sized to frame opening

Specifications

Material substrate	Aluminum 6000 Series
Certifications	<ul style="list-style-type: none"> ▪ Meets ANSI/BHMA A156.3 Type 21A ▪ UL Listed for installation on labeled frame

Sizes (available in five sizes for variable door opening widths)

Filler Bar number	Length	Dimensions (Width X Depth X Length)
FL20	20"	1 5/8" x 5/8" x 20"
FL32	32"	1 5/8" x 5/8" x 32"
FL44	44"	1 5/8" x 5/8" x 44"

Finishes

BHMA	Description	Substrate	Finish
628	Satin Aluminum, Anodized	Aluminum	US28
711	Black Anodized	Aluminum	315AN
713	Satin Chrome, Anodized	Aluminum	—

Custom finishes are available as engineering special, consult customer service.

Available accessories

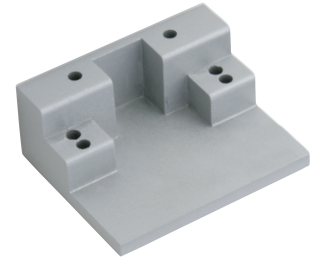
- Security pin screws



MB1 / MB2

Mounting brackets

- Allows stop mounted hardware to be properly installed without damaging the COR coordinator, such as a parallel arm closer or a non-fire-rated surface vertical rod strike
- Stop mounted hardware will need to be lowered to compensate for the height of the coordinator and mounting bracket



Specifications

Material substrate	Aluminum A380
Certifications	Meets ANSI/BHMA A156.3 Type 21A

Sizes

Product	Jamb depth	Stop width	Dimensions
MB1	4 3/4" Min	Over 2 1/2"	4" W x 3" D x 1 5/16" T
MB2	4 3/4" Min	Up to 2 1/2"	4" W x 3 1/4" D x 1 5/8" T

Finishes

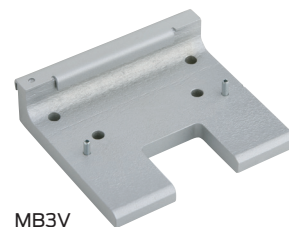
BHMA	Description	Substrate	Finish
600	Primed for paint	Aluminum	USP
-	Flat Black Painted	Aluminum	BLK
689	Aluminum Painted	Aluminum	SP28

Custom finishes are available as engineering special, consult customer service.

MB1F/MB2F/MB3F, MB1V/MB2V/MB3V

Mounting brackets

- Allows for stop mounted hardware to be properly installed without damaging the COR coordinators, such as surface vertical rod exit device strikes
- Latch will need to be lowered to compensate for the height of the coordinator and mounting bracket
- MB-V are designed for Von Duprin 8827-F soffit latch



Specifications

Material substrate	Cold rolled steel
Certifications	Meets ANSI/BHMA A156.3 Type 21A

Sizes

Product	Jamb depth	Stop width	Dimensions
MB1F	5"	1 1/2" - 2 1/4"	4" W x 3" D x 1 5/8" T
MB1V	5"	1 1/2" - 2 1/4"	4" W x 3" D x 1 5/8" T
MB2F	5 7/8"	2 3/8" - 3 1/4"	4" W x 3" D x 1 5/8" T
MB2V	5 7/8"	2 3/8" - 3 1/4"	4" W x 3" D x 1 5/8" T
MB3F	6 7/8"	Over 3 3/8"	4" W x 3 1/2" D x 1" T
MB3V	6 7/8"	Over 3 3/8"	4" W x 3 1/2" D x 1" T

Finishes

BHMA	Description	Substrate	Finish
600	Primed for paint	Steel	USP
-	Flat Black Painted	Steel	BLK
689	Aluminum Painted	Steel	SP28

Custom finishes are available as engineering special, consult customer service.

Flush bolts, strikes and coordinators

Coordinators, filler bars and mounting brackets

COR7G/COR9G

Gravity coordinators

- When active door is open, coordinator prevents active door from closing until inactive door bypasses
 - Closing of inactive door causes strike plate on top of door to contact cam and lift arm, allowing active door to close
 - As inactive door continues closing, roller rides over strike plate on to door bracket, holding arm above active door
- Non-handed
- Gravity action arm and door bracket are adjustable on the job for ease of installation (rubber roller provides quiet and efficient operation, and helps protect the astragal and doors from damage)
- Nylon roller on short arm glides smoothly over door bracket and strike, ensuring silent operation.

Specifications

Available sizes	<ul style="list-style-type: none"> COR7G 7" projection - for use on pairs of doors with astragal on active door up to 4' or with astragal on inactive door up to 3'4" or with astragal on both doors up to 2'10" COR9G 9" projection - for use on pairs of doors with astragal on active over 4' or with astragal on inactive door over 3'4" or with astragal on both doors over 2'10"
Material substrate	Forged brass
Mounting hardware	8-32 X 1" FPHMS
Certifications	<ul style="list-style-type: none"> Meets ANSI/BHMA A156.3 Type 21B UL Listed for fire doors

Finishes

BHMA	Description	Substrate	Finish
605	Bright Brass	Brass	US3
606	Satin Brass	Brass	US4
612	Satin Bronze	Brass	US10
613	Oil Rubbed Bronze	Brass	US10B
625	Bright Chrome	Brass	US26
626	Satin Chrome	Brass	US26D

Custom finishes are available as engineering special, consult customer service.

Available accessories

- Security pin screws
- Replacement mounting package
- Replacement roller and bolt package
- Replacement rubber roller and pin package
- Replacement rub plate package

CBI

Carry bar

- Used when it is possible for the inactive door to be opened before the active door
- Prevents damage to the doors and other hardware
- Nylon roller insures quiet and efficient operation
- Non-handed
- Standard through bolts for mounting

Specifications

Material substrate	All-steel construction
Certifications	Meets ANSI/BHMA A156.3 Type 21A

Dimensions

Door closed	Door open
1 5/8" X 5 3/4"	1 5/8" X 2 1/2"

Finishes

BHMA	Description	Substrate	Finish
600	Primed for paint	Steel	USP
632	Bright Brass	Steel	US3
633	Satin Brass	Steel	US4
639	Satin Bronze	Steel	US10
640	Dark Satin Bronze	Steel	US10B
651	Bright Chrome	Steel	US26
652	Satin Chrome	Steel	US26D
-	Flat Black Coated	Steel	BLK

Custom finishes are available as engineering special, consult customer service.

Available accessories

- Security pin screws
- Replacement nylon roller and pin package

